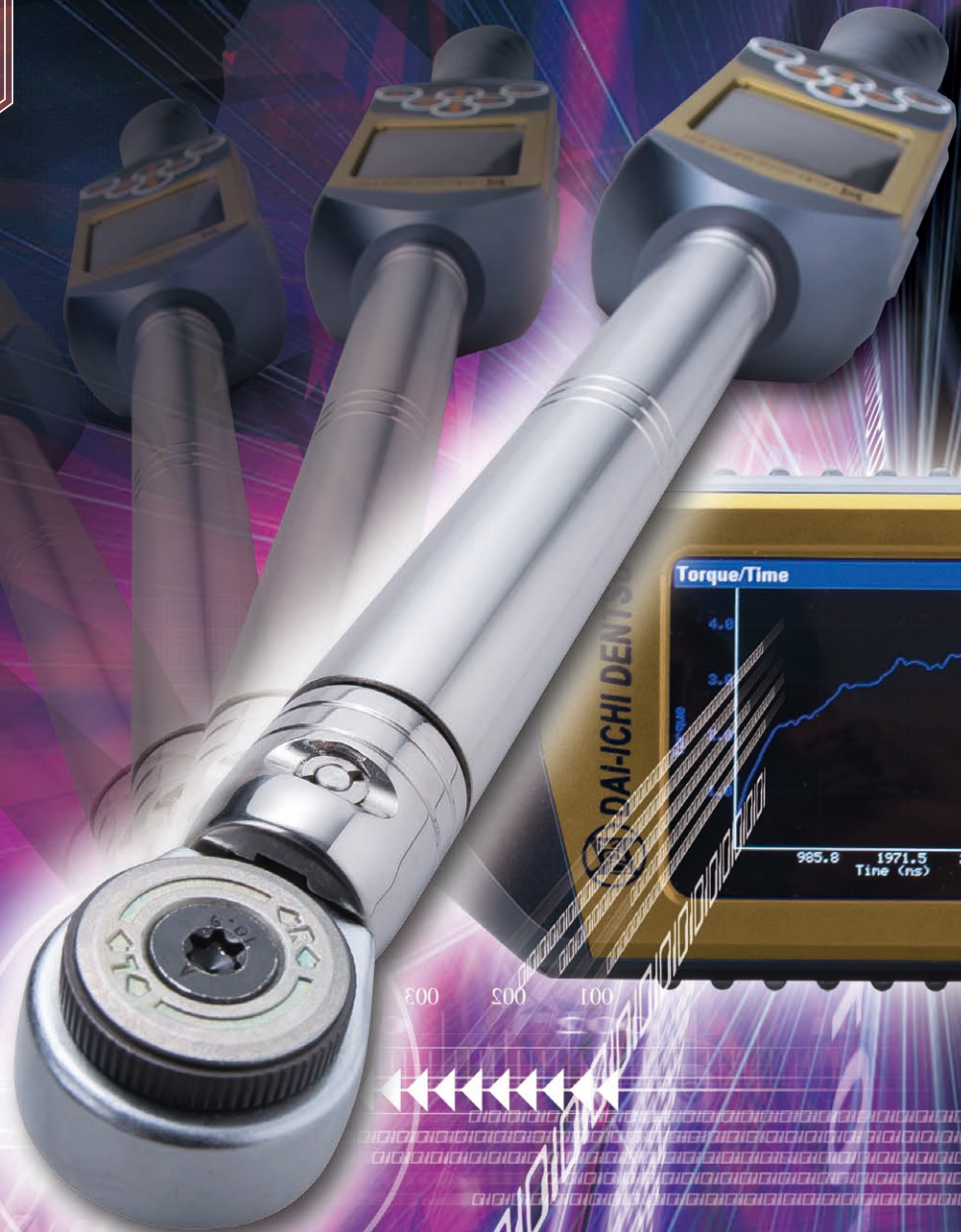


Torque Wrench Freedom³

Freedom³

Quality Analysis Production



*Sophisticated Wireless Data Transmission
in General Purpose Torque Wrench*



DAI-ICHI DENTSU LTD.

A High Quality Tool with Innovative Features

Freedom³ is available to setup Torque, Angle and Yield method. Fastening mode is equivalent to Nutrunner. This wrench is effective in situations where using a Nutrunner is impractical because of limited space or higher accuracy requirements.

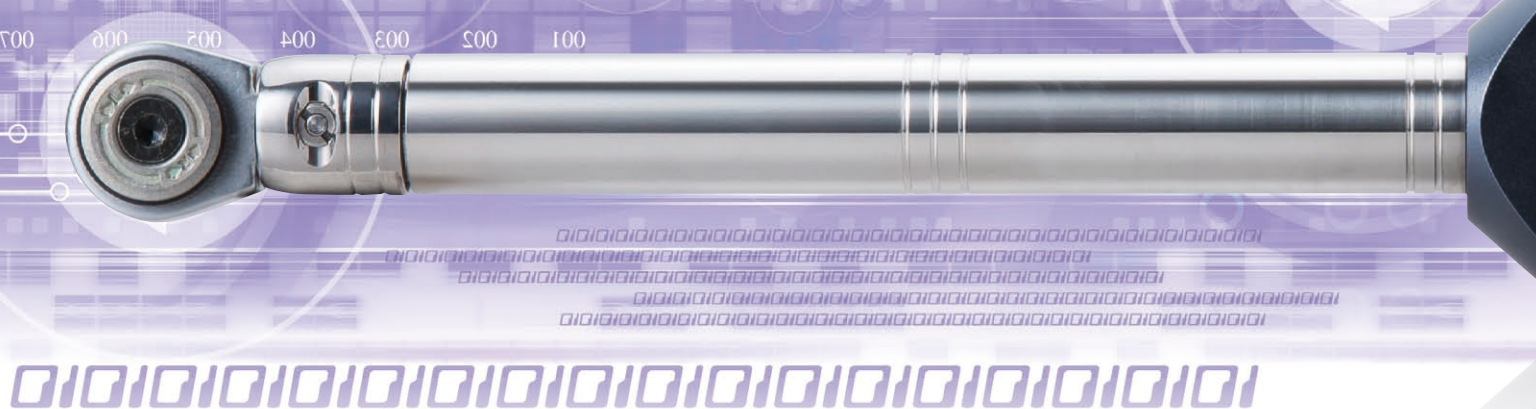
Visual Performance

Quality assessment of Joint analysis is available via color touch screen. Detect Torque/Angle and display Torque curve on the screen instantly. Data can be stored.

Tightening Analysis, Accuracy, and Operability

Suitable for small lot production, prototype analysis, and production required accuracy and application with limited space.

Allow everything you need in fastening: and rigidity measurements of the fastened Perfect as a back-up tool in place of electrical



All fastening processes (Torque/Angle/Yield) are available by Freedom³. Parameter can be edited directly on the wrench and stored.

Specifications

- Fastening torque check
- Fastening peak torque
- Fastening peak torque + angle
- Loosening + fastening
- Loosening peak
- Minimum torque
- Yield point detection
- Virtual keyboard
- Error code
- Statistic XR chart management
- Picture display, data from each test
- Bluetooth function
- Soft/Hard joint analysis
- Final torque value
- Graphical display and storage of each fastening curve
- Direct input of test procedure into the wrench
- On-wrench analysis of the torque curve profile
- On-wrench zoom function

Large Memory Capacity (PC communication via USB port) or wireless communication

Fastening data and curve results can be stored up to 20,000.- in the internal memory. Fastening program can be set up 1,000 and PC connection is not required. PC communication is available via wireless or USB connections.

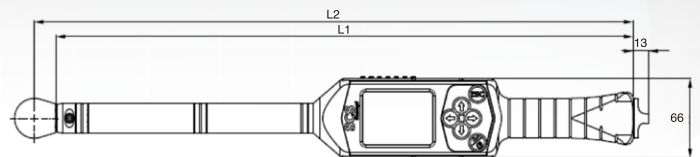
Quick, Handy and Accurate Operation

A proprietary system has been incorporated to correct erroneous turn angles by monitoring the temperature of the gyroscope. Quick and accurate operation is now possible regardless of the measurement time. Compared to similar torque wrenches, Freedom³ can provide the correct result with fastest operation.

Quality First

Soft/Hard joint, high/low friction and accurate torque/angle measurement are available. Input the required program on the wrench. Easy program is available through Managing software(SQnet/QS Torque). Display the statistical calculation result directly on the touch screen.

quality control, joint analysis, joints. tools or in small production runs.

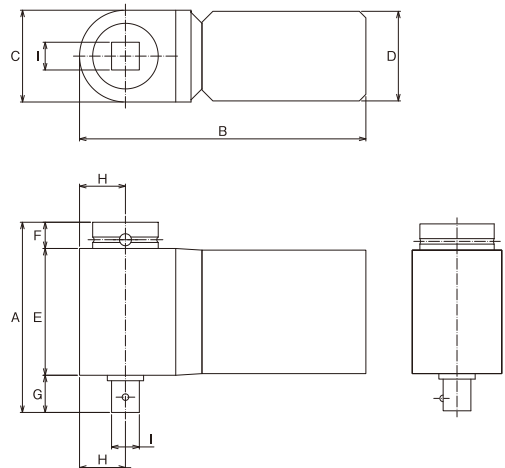


Tool model	Maximum torque [N·m]	Drive [mm]	L1 [mm]	L2 [mm]	Weight [kg]
Freedom ³ 15	15	9 × 12 female	375	393	0.8
Freedom ³ 30	30	9 × 12 female	375	393	0.86
Freedom ³ 70	70	9 × 12 female	480	498	0.93
Freedom ³ 100	100	9 × 12 female	480	498	0.93
Freedom ³ 200	200	14 × 18 female	604	629	1.5

Tool model	Maximum torque [N·m]	Drive [mm]	L1 [mm]	L2 [mm]	Weight [kg]
Freedom ³ 300	300	14 × 18 female	754	779	1.86
Freedom ³ 400	400	14 × 18 female	854	879	2
Freedom ³ 600	600	14 × 18 female	1,032	1,057	3.65
Freedom ³ 800	800	∅20 male	1,250	1,330	5.1
Freedom ³ 1000	1,000	∅20 male	1,530	1,610	6.25

Wireless and Rechargeable Torque Transducer

- ⊗ Transfer the measured data to special PC by wireless.
- ⊗ Easy inspection(calibration)
- ⊗ Solve the measurement at the difficult location because of cable less.
- ⊗ Reduce the preparation time drastically for wireless.
- ⊗ No need to worry about cable faulty.
- ⊗ Angle measurement is available with torque measurement. (Optional)



Model	Measurement load [N/m]	Socket head size [inches]	Weight [gf]	Dimensions [mm]								
				A	B	C	D	E	F	G	H	I
MSRT20QC	20	1/4" 20Nm/15ftlb CheckStar+Pin	330	71.5	106.0	30.0	41.0	56.0	6.0	9.5	13.0	□6.35
MSRT75QC	75	3/8" 75Nm/55ftlb CheckStar+Pin	380	77.0	108.0	30.0	41.0	56.0	8.0	13.0	15.0	□9.5
MSRT180QC	180	1/2" 180Nm/133ftlb CheckStar+Pin	580	87.0	131.0	42.0	41.0	58.0	12.0	17.0	21.0	□12.7
MSRT250QC	250	3/4" 250Nm/184ftlb IS CheckStar	950	106.0	141.0	52.0	41.0	60.0	21.0	25.0	26.0	□19
MSRT500QC	500	3/4"500Nm/370ftlb CheckStar+Pin	950	106.0	141.0	52.0	41.0	60.0	21.0	25.0	26.0	□19

*The torque with angle measurement is optional.



JQA-QMA13393



DAI-ICHI DENTSU LTD.

Headquarters

1-54-1, Shimoishihara, Chofu-City, Tokyo 182-0034 Japan
 TEL: +81-424-40-1465 FAX: +81-424-40-1436
 U R L : <http://www.daiichi-dentsu.co.jp>
 E-mail : sales@daiichi-dentsu.co.jp

KANI PLANT

690-1 Omori, Kani-City, Gifu, 509-0238 Japan
 TEL: +81-574-62-5865 FAX: +81-574-62-3523